

STATE OF MINNESOTA, } ss.
COUNTY OF MURRAY, }

I hereby certify that the within Instrument
was filed in this office for record on the
30TH day of AUGUST A.D. 20 19
at 9:00 o'clock A. M. and was duly
recorded as Document No. _____

Greilyn C. Larson
County Recorder

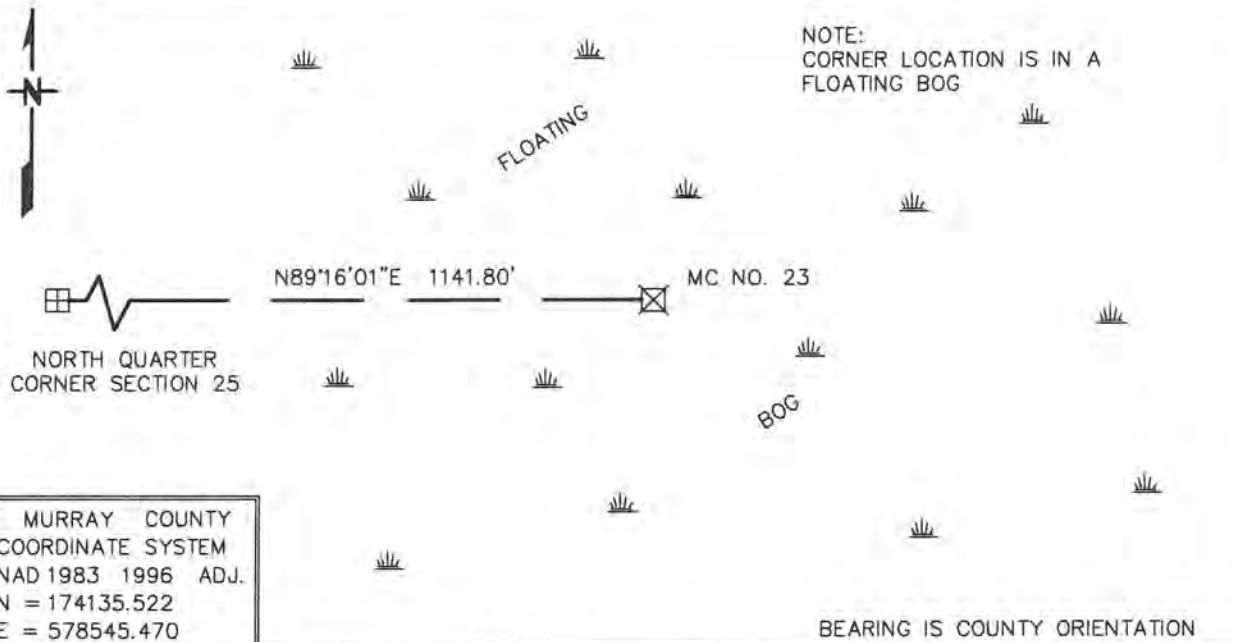
Index No. R-23-24

CERTIFICATE OF LOCATION OF GOVERNMENT CORNER

NUMBER 23 MEANDER Corner of Section 25, Township 107 N, Range 39 W
5TH Principal Meridian, State of Minnesota, County of MURRAY

At the corner location shown on the sketch:

- On _____ found a _____
DATE
- left monument as found, lowered monument, removed monument (explain)
- On 10/18/2017 COMPUTED A POSITION FOR CORNER
DATE



Statement of evidence for this corner location is on back of this page.

JULY 2018
WMA00745

I hereby certify that this plan, specification, or report was prepared by me or under my direct supervision and that I am a duly Licensed Land Surveyor under the laws of the State of Minnesota.

SIGNATURE

Bruce W. Shepperd
BRUCE W. SHEPPERD

DATE

8/15/19

License Number

17003

Meander Corner Number 23 of Section 25, Township 107 North, Range 39 West

For additional information see:

1985 November, Lowell R. Pommerening Jr., PLS 17005, with the Minnesota Department of Natural Resources filed a Certificate of Location of Government Corner for this corner in the Murray County Recorder's Office.

The DNR Division of Lands and Minerals contacted the following for survey information:

Website - mngeo.state.mn.us for GLO plat and field notes

Website - murray-countymn.com for section and quarter section corner information

Murray County Recorder's Office

Zieske Land Surveying, Inc. of Windom

1861 U.S. General Land Office notes, obtained from mngeo.state.mn.us, show the corner marked with a wood post set in mound of earth with pits and trench dug around the mound. Also, planted Alder seed between the four pits and trenches. The corner is shown:

17.30 chains (1141.80 feet) from the north quarter corner of Section 25

A distance east along the section line from the meander corner was not measured.

2017 October 18, the DNR Division of Lands and Minerals computed a position for the corner because the area of the corner is in a floating bog. The position for the corner was computed as follows:

a) on the easterly extension of a line from the northwest corner of Section 25 through the north quarter corner of Section 25

b) 1141.80 feet (GLO distance) from the north quarter corner of Section 25

Analysis of the above information led the DNR Division of Lands and Minerals to conclude that the above computed position is the location of the corner. A monument was NOT set to mark the location of the corner, because of a floating bog.